

# Operating Instructions



**Air Trimmer  
AT-1**



Industrial Air Products

**Beaver Tools, Inc.**  
4031 Gravois Avenue  
St. Louis, MO 63116

**800-365-6677**  
314-773-5999  
Fax: 314-773-8490  
Email: [tooltalk@beavertools.com](mailto:tooltalk@beavertools.com)  
[www.beavertools.com](http://www.beavertools.com)



Industrial Air Products

**800-365-6677**  
[www.beavertools.com](http://www.beavertools.com)

# ***Thank You!***

---

Thank you for purchasing a quality industrial air product from Beaver Tools.

Read all these operating instructions before attempting to operate this product. Keep the operating instructions with this product or in a safe place accessible to all users.

<b>Safety First</b>	<b>3</b>
<b>Tool Maintenance</b>	<b>4</b>
<b>Operating Instructions</b>	<b>5</b>
<b>Changing Bits</b>	<b>6-7</b>
<b>Bits</b>	<b>8</b>
<b>Accessories</b>	<b>9</b>
<b>Parts Diagram</b>	<b>10</b>
<b>Warranty Package</b>	<b>11</b>

# ***Warranty Package***

---

All industrial air products come with the Beaver Tools warranty package. The warranty package ensures that you purchased a professional power tool that is built to last.

If you have any questions about the warranty, contact a customer service representative at 800-365-6677.

**1**

## **Year Warranty**

We will repair or replace any part or parts of the product or accessory that proves to be defective in workmanship or material. Beaver Tools warrants products for a period of one year from the date of original purchase.

**1**

## **Year Service**

Beaver Tools will maintain any of our products and replace worn parts for free, anytime during the first year after purchase.

### **LIMITED ONE YEAR WARRANTY**

Beaver Tools, Inc. warrants its professional power tools for a period of one year from the date of original purchase. We will repair or replace at our option, any part or parts of the product and accessories covered under this warranty which, after examination, proves to be defective in workmanship or material during the warranty period. For repair or replacement return the complete tool or accessory, transportation prepaid, to Beaver Tools. Proof of purchase may be required. This warranty does not apply to repair or replacement required due to misuse, abuse, normal wear and tear or repairs attempted or made by other than our service center.

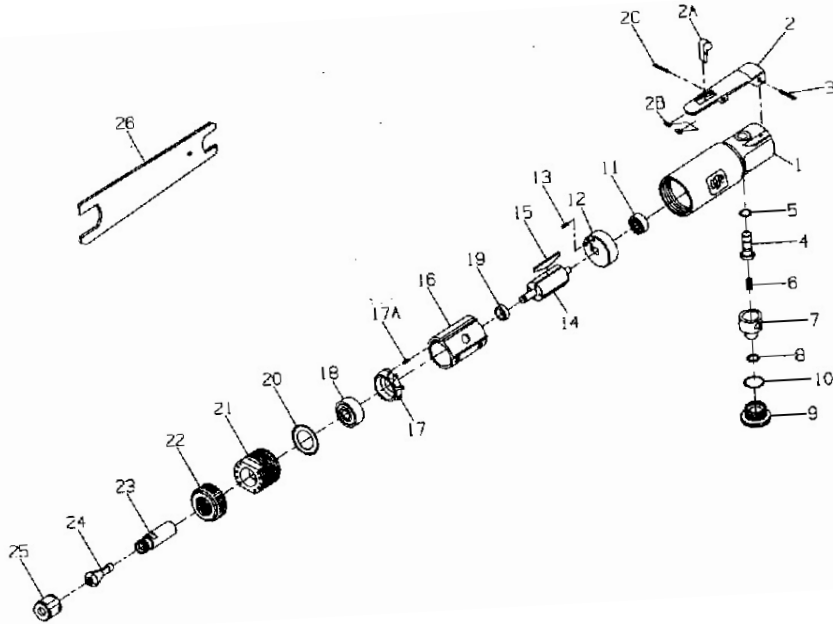
Any implied warranty, including the implied warranties of merchantability and fitness for a particular purpose, will last only for one year from the date of purchase.

The foregoing obligation is Beaver Tools' sole liability under this or any implied warranty and under no circumstances shall Beaver Tools be liable for any incidental or consequential damages. Some states do not allow limitation on how long an implied warranty lasts or the exclusion or limitation of incidental or consequential damages, so the above limitation or exclusion may not apply to you.

This warranty gives you specific legal rights and you may also have other legal rights which may vary from state to state.

# Parts Diagram

## Air Motor



Ref. No.	Description	Part No.	Ref. No.	Description	Part No.
1	Motor Housing	BP-308-A40	13	Motor Dowel	BP-308-98
2	Lever Assembly	BP-308-A400	14	Motor Rotor	BP-308-53
2A	Motor Latch	BP-308-402	15	4 Vane Packet	BP-308-42-4
2B	Motor Spring	BP-308-405	16	Motor Cylinder	BP-308-3
2C	End Plate	BP-308-739	17	End Plate Assembly	BP-308-A11
3	Lever Pin	BP-107-120	17A	Motor Dowel	BP-308-98
4	Valve Assembly	BP-308-A302	18	Front Bearing	BP-308-24
5	O-ring	BP-308-159	19	Motor Spacer	BP-308-448
6	Motor Spring	BP-308-51	20	Diffuser	BP-308-223
7	Motor Regulator	BP-308-249	21	Clamp	BP-308-107
8	Motor O-ring	BP-308-251	22	Cap	BP-308-23
9	Cap Assembly	BP-308-A266	23	Motor Body	BP-308-290
10	Valve Cap Seal	BP-308-206	24	Collet	BP-308-700
11	Rear Bearing	BP-308-22	25	Collet Nut	BP-308-699
12	Rear End Plate Assembly	BP-308-A12	26	Collet	BP-308-69

# Safety First

At Beaver Tools, your safety is our concern. Following are some simple guidelines that will keep you safe when operating your Beaver Tools product.

## Protect Yourself

- Safety Glasses**  
Wear safety glasses while operating power tools to avoid needless eye injuries.
- Dust Mask**  
If the operation creates dust, wear a face or dust mask.
- Ear Protection**  
To safeguard against possible hearing loss, it is recommended to wear ear plugs when exposed to high decibels for extended time periods.
- Dress Properly**  
Do not wear loose clothing or jewelry. Loose clothing, draw strings and jewelry can be caught in moving parts. Rubber gloves and non-skid footwear are recommended when working outdoors. Wear protective hair covering to contain long hair.
- Stay Alert**  
Watch what you are doing at all times and use common sense. Do not operate power tools when you are tired or while under the influence of medication or alcohol.

## Maintain a Safe Work Environment

- Keep Work Area Clean**  
Cluttered areas and benches invite injuries. Beaver Tools recommends using drop down air lines to keep work areas and floors free from air hoses. Beaver offers two different retractable air hose styles and sizes (BA-1207, BA-1208, BA-1215 and BA-1216).
- Avoid Dangerous Environments**  
Don't expose power tools to rain. Don't use power tools in wet or damp locations. Keep area well lit. Avoid chemical or corrosive environment. Do not use tool in the presence of flammable liquids or gases.
- Keep Children Away**  
Do not let anyone but the operator come into contact with the tool or air hose. All children should be kept away from work area.
- Store Idle Tools**  
When not in use, tools should be stored in a dry, high or locked up place and out of reach of children.
- Avoid Unintentional Starting**  
Do not carry an air connected tool with finger on trigger switch. Be sure nothing is depressing trigger when connecting tool to air hose. Keep hands, body and clothes clear of blades, bits, cutters, etc. when connecting the tool. Always disconnect tool from air supply before: handing the tool to another person, leaving the work area, moving the tool to another location, or performing tool maintenance.

# Tool Maintenance

Tool maintenance is an important part in keeping your Beaver Tools in proper working condition.

## 1. Lubrication

Always lubricate your pneumatic tools. Use one drop daily or several drops weekly of ten weight non-detergent air tool oil. We recommend our Beaver Tools Pneumatic Lubricant (BA-PL1). It comes in a bottle with a flip-top spout for easy pouring. If the Beaver Tool is not lubricated, the warranty is voided.

## 2. Keep Moisture Out

Keep moisture out of your Beaver Tools. We recommend our Mini Water Separator (BA-113) or our Air Control Unit (BA-421). These units will help keep moisture from accumulating inside your air tools. Allowing moisture to collect in you Beaver Tool will void the warranty.



BA-111

## 2. Clean Tools

Keep tools clean for better and safer performance. Always keep handles dry, clean and free from oil and grease.

## 3. Air Pressure

Always maintain the appropriate air pressure. Beaver Tools run on a minimum of 90 PSI and a maximum of 110 PSI. We recommend our Air Regulator with Gauge (BA-111) to monitor your air pressure at all times.



BA-1207

## 4. Air Hose

Check your air hose for leaks or cracks. Vinyl hoses do not kink or crack like plastic hoses.

Beaver Tools carries a line of vinyl air hoses that are either coiled or retractable.

## 5. Stay Sharp

Check all blades, bits, cutters, etc. for sharpness. It is important to keep tools sharp for optimum performance.

## 6. Check for Damaged Parts

Before further use of a tool, a guard or other part that is damaged should be carefully checked to determine that it will operate properly and perform its intended function. Check for alignment of moving parts, binding of moving parts, breakage of parts, mounting, and any other conditions that may affect its operation. Beaver Tools recommends that only identical replacement parts be used for repairs.

# Accessories

The Beaver Air Trimmer is a laminate flush trimming tool that gives you a perfect cut every time. There are many convenient accessories that can be used with the Air Trimmer.

## Accessories

Swivel Connector	BA-381
Coiled Air Hose	
1/4" x 30'	BA-1202
3/8" x 30'	BA-1203
Air Regulator with Gauge	BA-111
Pneumatic Tool Oil	BA-PL1
Automatic Oiler	BA-115
Mini Water Separator	BA-113
Blow Guns	
4" Tire Fill	BA-910
4" Straight Tip	BA-912
13" Straight Tip	BA-912L



BA-PL1

## Parts

Adjustment Ring	AF-01
Air Trimmer Body	AT-02
Polycarbonate Sub-base	AT-03A
Phillips Truss Head Screw, 8-32 x 1/4"	SPT-832250
Socket Head Set Screw 8-32 x 3/16"	SSS-832188
Air Trimmer Motor*	BP-IR308

\*Motor parts see page 10.



BA-381



BA-1202

BA-1203

# Bits

## Bits

Air Trimmer Bit	BIT-AT1
Air Trimmer Bearing Bit, 1/2" Diameter	BIT-AT2
Air Trimmer Bearing Bit, 1/4" Diameter	BIT-AT2A
Glue Relief Bit, 1/2" Diameter	BIT-AT3
Glue Relief Bit, 3/8" Diameter	BIT-AT3A
Nylon Bearing Bit	BIT-AT4
15 Degree, Glue Relief Bit	BIT-AT5
Bevel Bit with Ball Bearing Guide, 1/4" Shank, 2 Flute, 15 Degree Bevel	BIT-B15
Bevel Bit with Ball Bearing Guide 1/4" Shank, 2 Flute, 25 Degree Bevel	BIT-B25
Bevel Bit with Ball Bearing Guide, 1/4" Shank, 2 Flute, 45 Degree Bevel	BIT-B45
Bevel Bit with 1/4" Shank, 3 Flute, 7 Degree Bevel	BIT-B7
Air Trimmer Filing Bit	BIT-NE1



# Operating Instructions

## Air Trimmer Rules

1. Always disconnect the Air Trimmer from the air hose before making adjustments and inserting bits.
2. Always be sure the collet nut is securely tightened to prevent the bit from slipping during use.
3. Make certain that the workpiece is rigidly held and free of obstructions.

## Air Trimmer Operation

1. With the tool disconnected from the air supply, insert a bit (see page 6 & 7). Make sure the bit is correctly adjusted. Reconnect the Air Trimmer to the air supply. Air pressure should be a minimum of 90 PSI to a maximum of 110 PSI.
2. When first using the Beaver Air Trimmer, it is a good idea to test it out on sample material. This will allow you to get a feel and recognize the sound of the motor when it is operating at its most efficient load.
3. Position the Air Trimmer with the base of the tool resting on the surface of the work piece.
4. Gently squeeze the trigger to initiate power. Squeezing the trigger all the way will give maximum power and a firm, comfortable hold on the tool. Push the Air Trimmer at a moderate pace. Pushing too fast will cause chipping. Always push the Air Trimmer from left to right, or counter clockwise, around the work.



# Changing Bits

1. Loosen the locking ring and thread the motor out of the body. (Figure 1)



Figure 1

2. Slide the motor out of the body. (Figure 2)



Figure 2

3. Using the stamped wrenches, loosen the collet nut. One wrench is on the armature shaft and the other is on the collet nut. Remove the bit. (Figure 3)



Figure 3

4. Insert a new bit into the collet. (Figure 4)

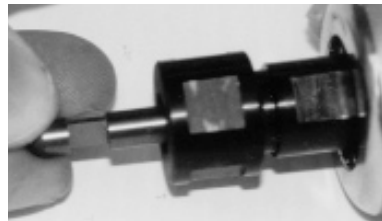


Figure 4

# Changing Bits

5. After inserting the bit, tighten the collet nut securely and remove both wrenches. Do not tighten the collet without a bit installed. (Figure 5)



Figure 5

6. Slide the motor into the tool body. (Figure 6)



Figure 6

7. Thread the body onto the motor until desired bit height is reached. Tighten the locking ring against body to lock in height adjustment. (Figure 7)



Figure 7